

Visualizing Houston–Area Wetland Loss 1987–2017

Natural Color Composite / WGS 84

by Letti Campo

Created October 17, 2022
Updated November 13, 2022

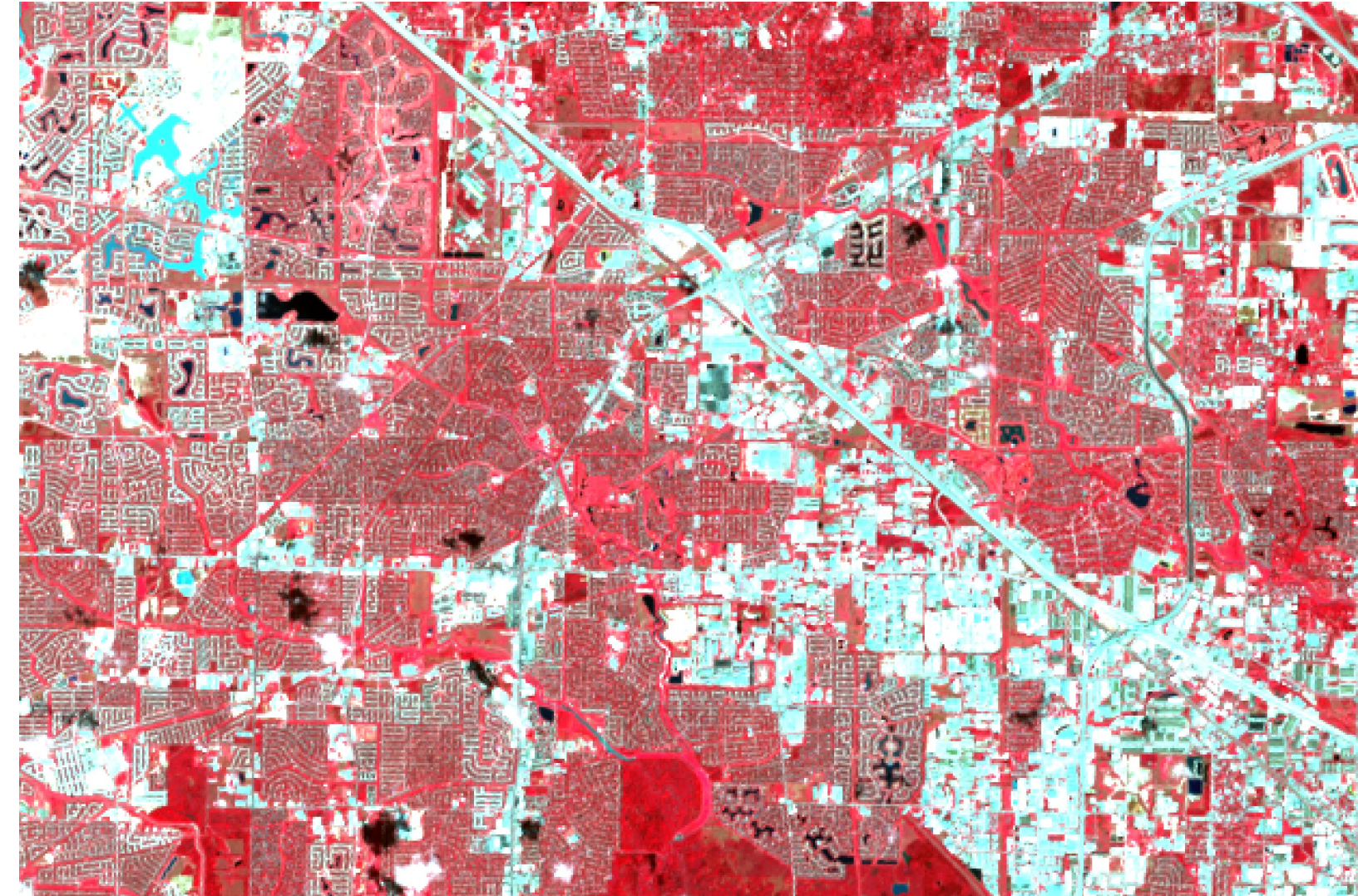
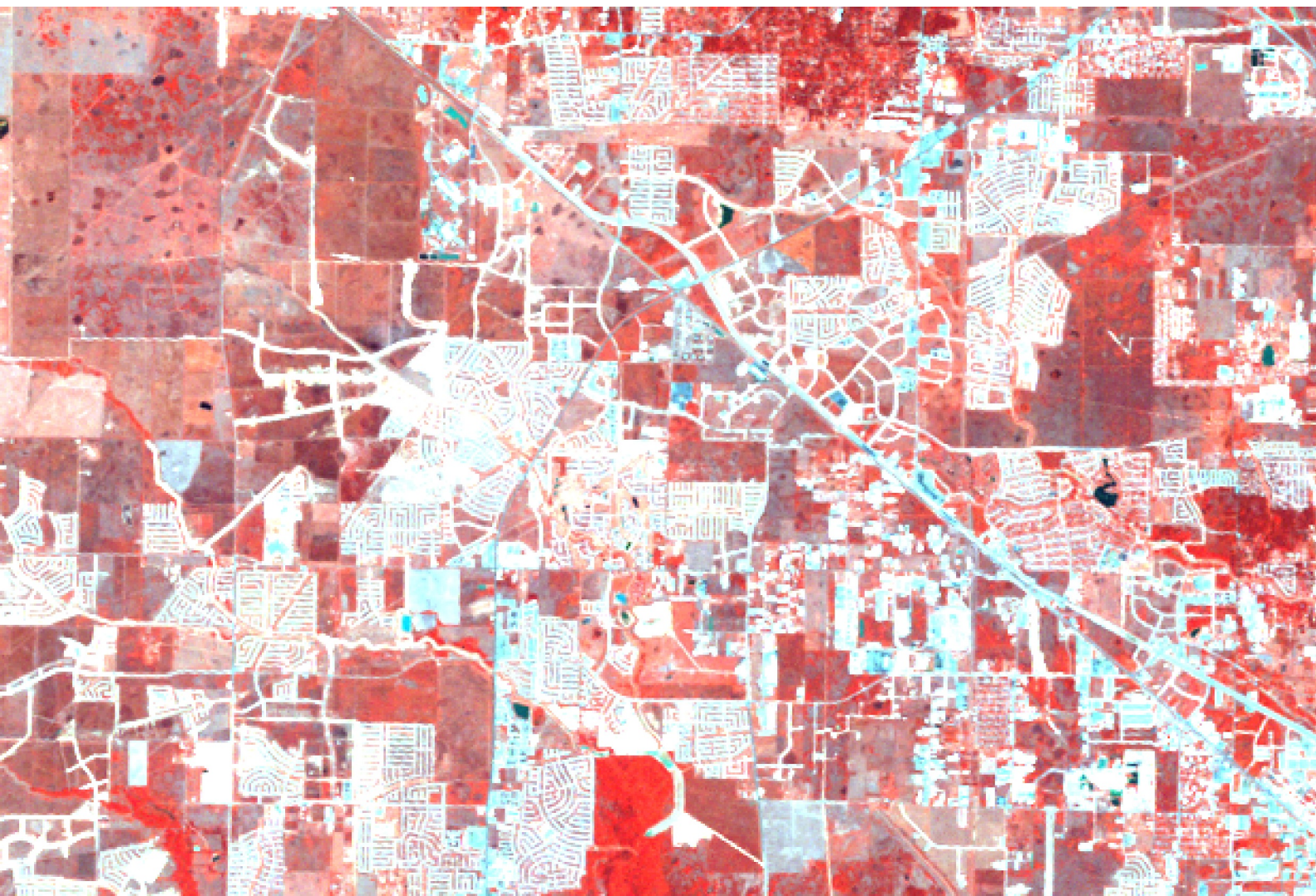
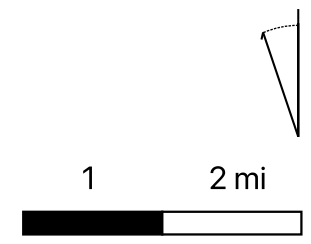
Landsat-5 and Landsat-8 images courtesy of the U.S. Geological Survey

1987 Landsat 5 Legend

- Band 3 (Red) ■
- Band 2 (Green) ■
- Band 1 (Blue) ■

2017 Landsat 8 Legend

- Band 4 (Red) ■
- Band 3 (Green) ■
- Band 2 (Blue) ■



Visualizing Houston–Area Wetland Loss 1987–2017

False Color Infrared / WGS 84

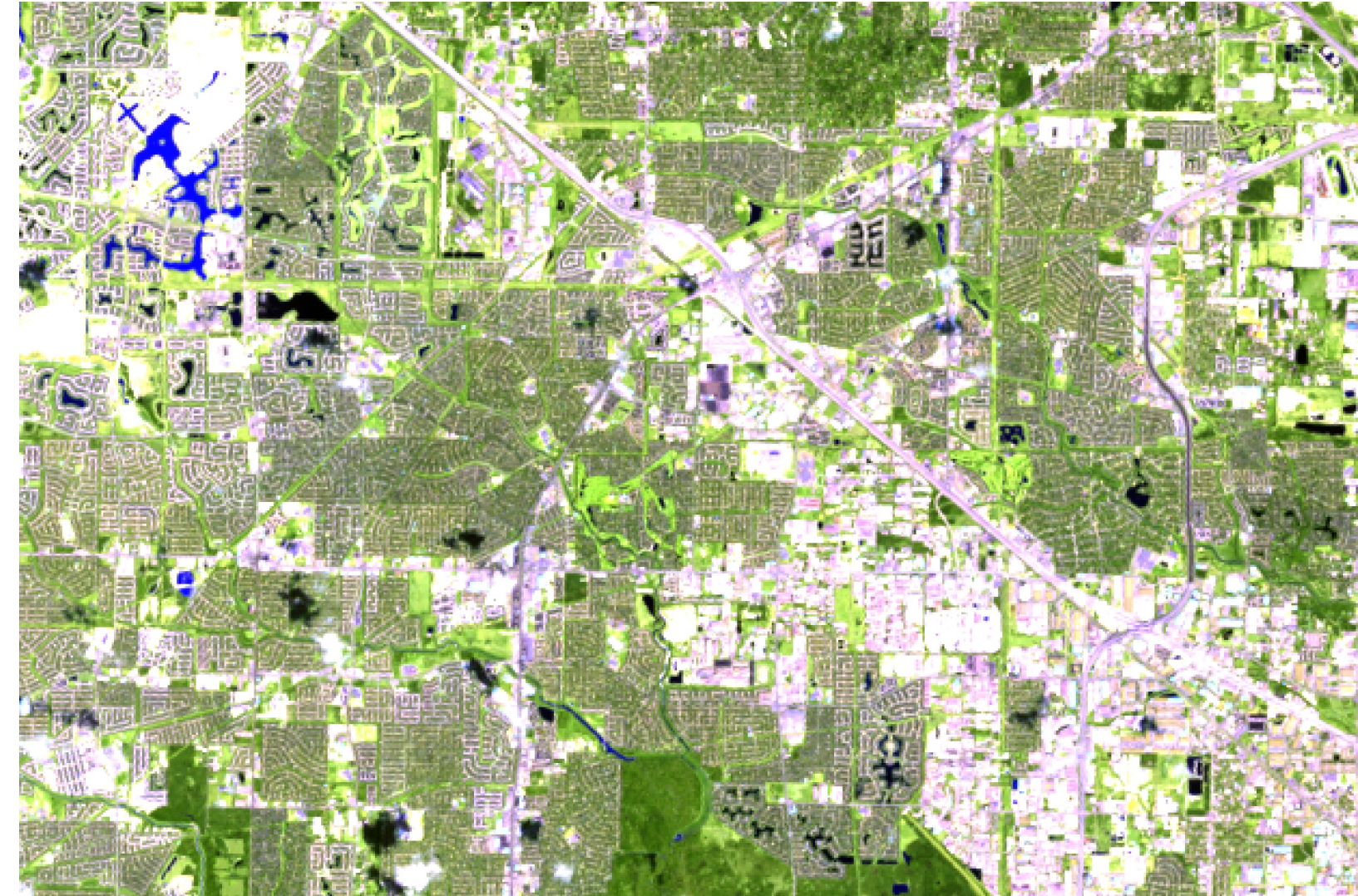
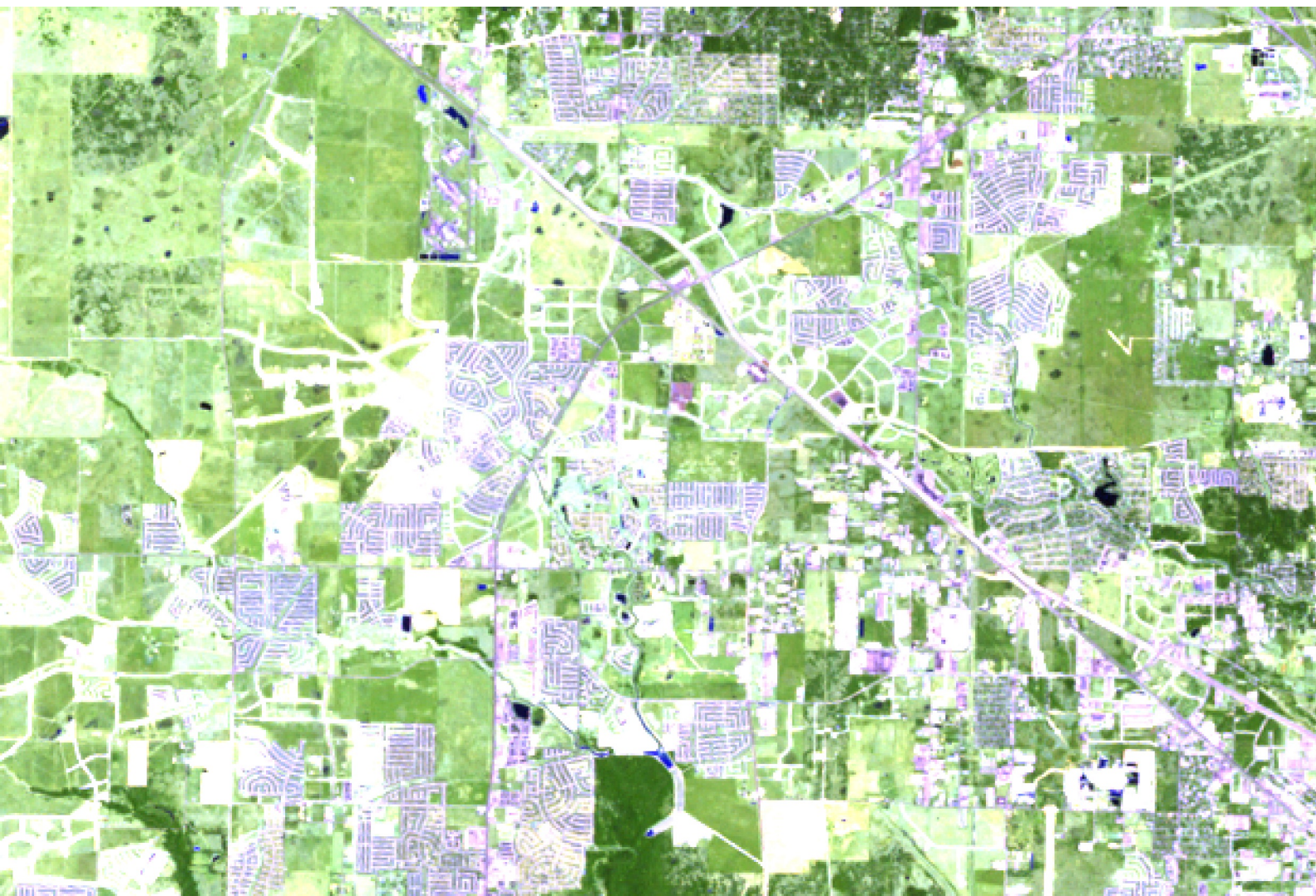
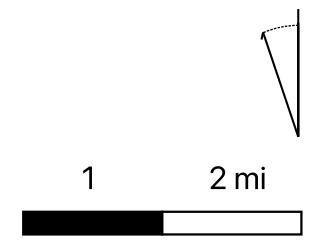
by Letti Campo

Created October 17, 2022
Updated November 13, 2022

1987 Landsat 5 Legend
 Band 4 (Red) ■
 Band 2 (Green) ■
 Band 1 (Blue) ■

2017 Landsat 8 Legend
 Band 5 (Red) ■
 Band 4 (Green) ■
 Band 3 (Blue) ■

Landsat-5 and Landsat-8 images courtesy of the U.S. Geological Survey



Visualizing Houston–Area Wetland Loss 1987–2017

False Color Urban / WGS 84

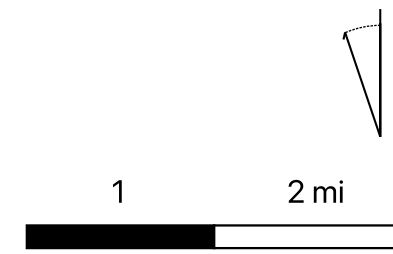
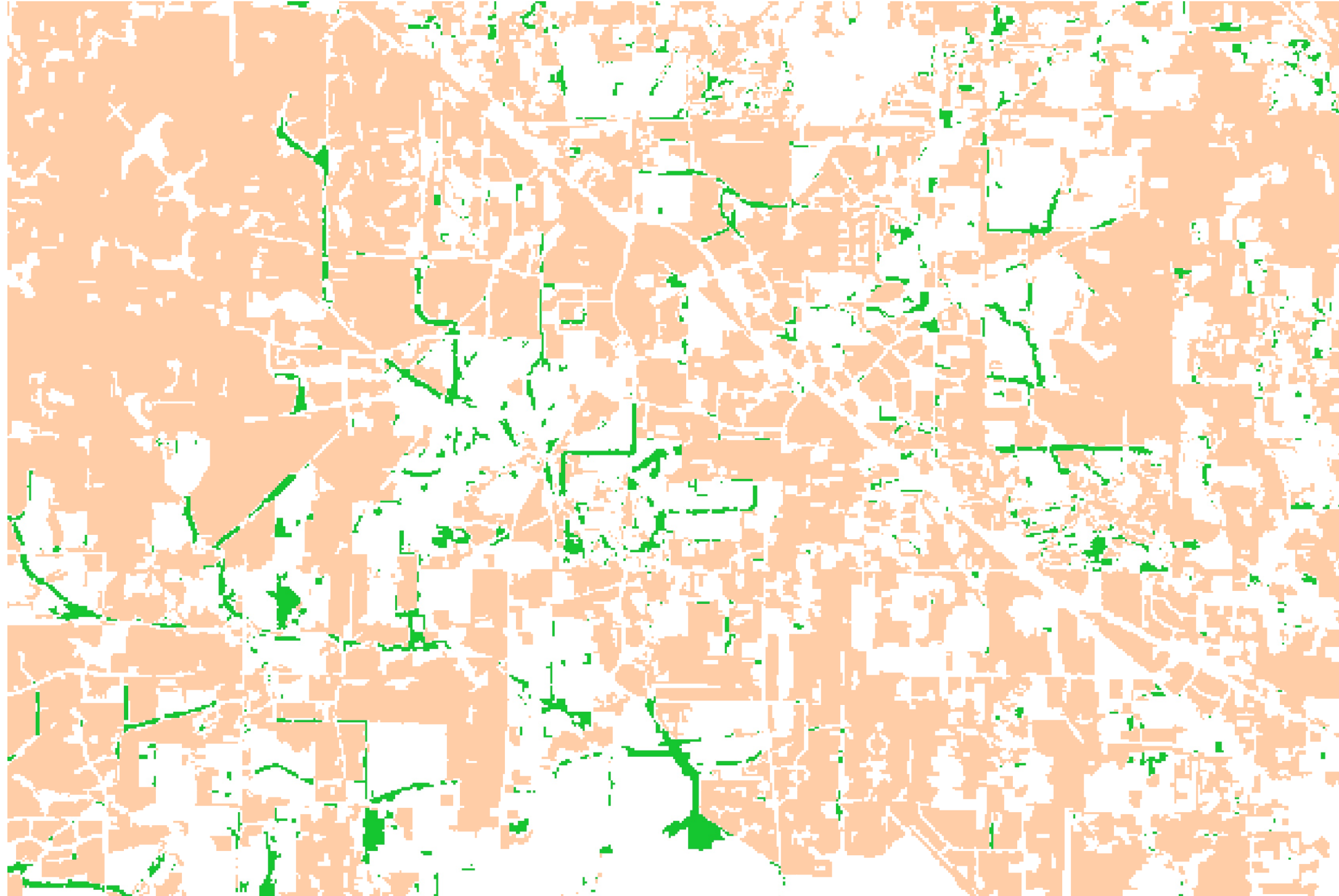
by Letti Campo

Created October 17, 2022
 Updated November 13, 2022

1987 Landsat 5 Legend
 Band 7 (Red) ■
 Band 5 (Green) ■
 Band 3 (Blue) ■

2017 Landsat 8 Legend
 Band 7 (Red) ■
 Band 6 (Green) ■
 Band 4 (Blue) ■

Landsat-5 and Landsat-8 images courtesy of the U.S. Geological Survey



Total wetland
area lost in
this area:
1198 Acres

Visualizing Houston–Area Wetland Loss 1987–2017

Wetland change from 1987 to 2017

by Letti Campo

Created October 17, 2022

Updated November 13, 2022

